



Fueling our Economy



FarmTech
ENERGY CORPORATION

Durham Region Ethanol Plant

About Us

As president of FarmTech Energy Corporation, I represent a farmer-based initiative that has been developing a business model to build a 12 hectare state-of-the-art ethanol plant in Oshawa's Industrial Portlands. More than 800 members of the local community will own and operate the plant as a co-op. The plant's main suppliers represent more than 1,700 corn growers/farmers from Highway 400 east to Belleville.

My family has been proudly farming in Durham Region for the past five generations.

This is a project that will benefit our community, the environment, and our economy.

Dan O'Connor
President FarmTech Energy Corporation

Clean and Green Technology To Fuel the Durham Region Economy

The \$185 million ethanol plant will create 300 construction jobs and as many as 700 industry-related, full-time jobs, injecting more than \$60 million annually into the local economy.

This state-of-the-art plant would become the fourth fuel ethanol plant in Ontario, putting Oshawa at the forefront in the evolution of this significant environmental industry.

Ethanol is the Way of the Future

Ethanol is a clean burning fuel that can be blended with gasoline to improve vehicle performance and reduce greenhouse gas emissions by 30%. It is energy efficient and environmentally friendly.

Most ethanol is made from corn and other crops including wheat, barley, and sugar cane.

Ethanol is produced by taking the starch portion of the corn and fermenting it. The fermented starch is distilled into alcohol.

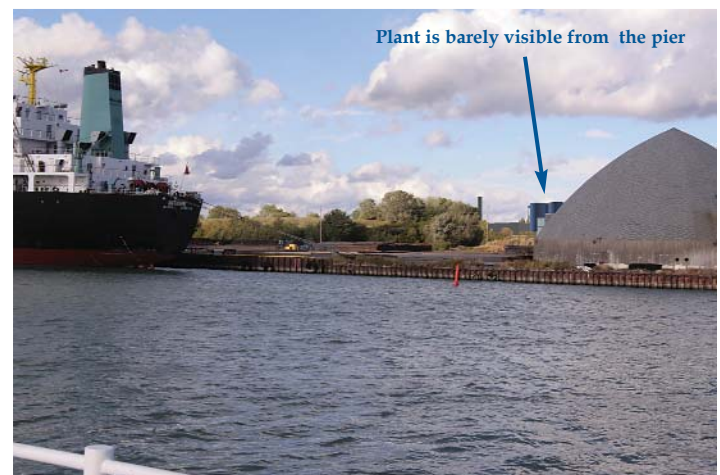
Only the starch portion of the corn, which is about 70% of the kernel, is made into ethanol. The leftover by-product is called distillers grain. This is a highly sought after quality feed for the livestock industry. The carbon dioxide created in the ethanol production process is captured and sold to the food and beverage industry to carbonate drinks and fast freeze foods.

Ethanol Helps Our Environment

Today's modern ethanol plants are as clean and green as the ethanol they produce. There is no waste. This plant will produce 210 million litres of ethanol a year and will meet the highest provincial and federal environmental standards.

The Ontario government has mandated that all gasoline currently sold in Ontario contain 5% ethanol, and 10% ethanol by 2010.

This increased use of ethanol reduces green house gas emissions. Once this target is reached, it's estimated that the emissions reduced would be the same as removing half a million vehicles from our roads each year.



View from the west prior to landscaping

Oshawa Benefits from Clean and Green Technology

The proposed site of the plant is in Oshawa's Industrial Portlands. The plant will be set back from the port, behind Gifford Hill. The height of the hill, adjacent buildings, and landscaping including trees and berms will screen much of the plant from view.

This site is an ideal location. It's close to major transportation routes including Highway 401, and the working port. The ability to ship corn and distiller grains by water is both efficient and environmentally friendly. Marine traffic through the Port of Oshawa keeps more than 12,000 trucks off our roads. Currently ten companies use the Port of Oshawa, which has been designated by the Federal Government as a working port.

The Durham Region presents a geographical advantage rarely realized in North America. A significant amount of corn is grown locally. Since there is no processor of corn in central Ontario, this creates an abundance of local corn for the ethanol process. The plant, in turn, creates a local market for our area farmers, helping to improve and strengthen agriculture in the central Ontario region.

The GTA, including the Durham Region, represents the largest market for ethanol in Canada. With both a supply of corn and a market for ethanol, the economic advantages of a plant in Oshawa present a very compelling environment in which to build the most competitive and sustainable facility in Canada.

Community consultations will be held this fall. Oshawa City Council will consider planning the applications in the coming months. Once government approvals are received, FarmTech Energy can begin construction and host a job fair.

Planning Process

Three applications are required for the development of the FarmTech Energy Ethanol Plant in Oshawa's Industrial Portlands. Amendments to the Official Plan and Zoning By-law will be followed by an application for Site Plan Approval. There will be public consultation as information is made available to the City and public as part of the review process. This will include all information relating to the site development such as storm water plans, grading plans and building elevations.

Official Plan Amendment

The property is found at the southeast corner of Oshawa's Industrial Portlands. The site is surrounded on two sides by existing Industrial sites (former Sugar Refinery, McAsphalt, Oshawa Harbour) and by the Second Marsh and Lake Ontario on the other two sides. The lands are designated as a specific Industrial designation called Special Waterfront. An amendment to the Official Plan is required to ensure that the ethanol facility is included within the range of uses that are permitted on the lands.

Zoning By-law Amendment

The property is presently zoned as Special Waterfront. While this zoning permits light manufacturing and processing of semi-manufactured products, it does not include the distilling type process that represents the ethanol facility; therefore an amendment is required to add this to the permitted uses of the zone.

Site Plan Approval

All development within the City of Oshawa requires city approval on plans and/or drawings pursuant to the Planning Act. As a condition of approval, the City may require the owner of the land to provide and maintain, at no expense to the City, such development features and facilities as are set out in the Planning Act and may require the owner of the land to enter into one or more agreements with respect to the provision and maintenance of such development features and facilities. These items include site access, parking and loading facilities, walkways, landscaping, easements, and grading information relating to storm water, site services, and overall site development. Each application will be subject to a pre-consultation process whereby the municipality, relevant agencies, and the public have an opportunity to comment on the proposal and all related documentation. All comments will be reviewed and addressed. The Official Plan Amendment and Site Plan applications will then be formally submitted to the City of Oshawa for review and approval under the Planning Act.

Environmental Approvals

The project will be subject to a screening level assessment under the Canadian Environmental Assessment Act. This process includes identifying, assessing and mitigating the potential environmental impacts of the project at every stage. The environmental assessment includes:

Project Description:

- Conceptual design of the plant
- Preliminary site services study (power, water etc.)

Completion of Environmental Baseline Studies:

- Environmental inventory of the site and study area including air quality, noise, geology, land use, wildlife and surface water conditions
- Socio-economic information of the area including land use, recreation and local economy

Environmental Review Report:

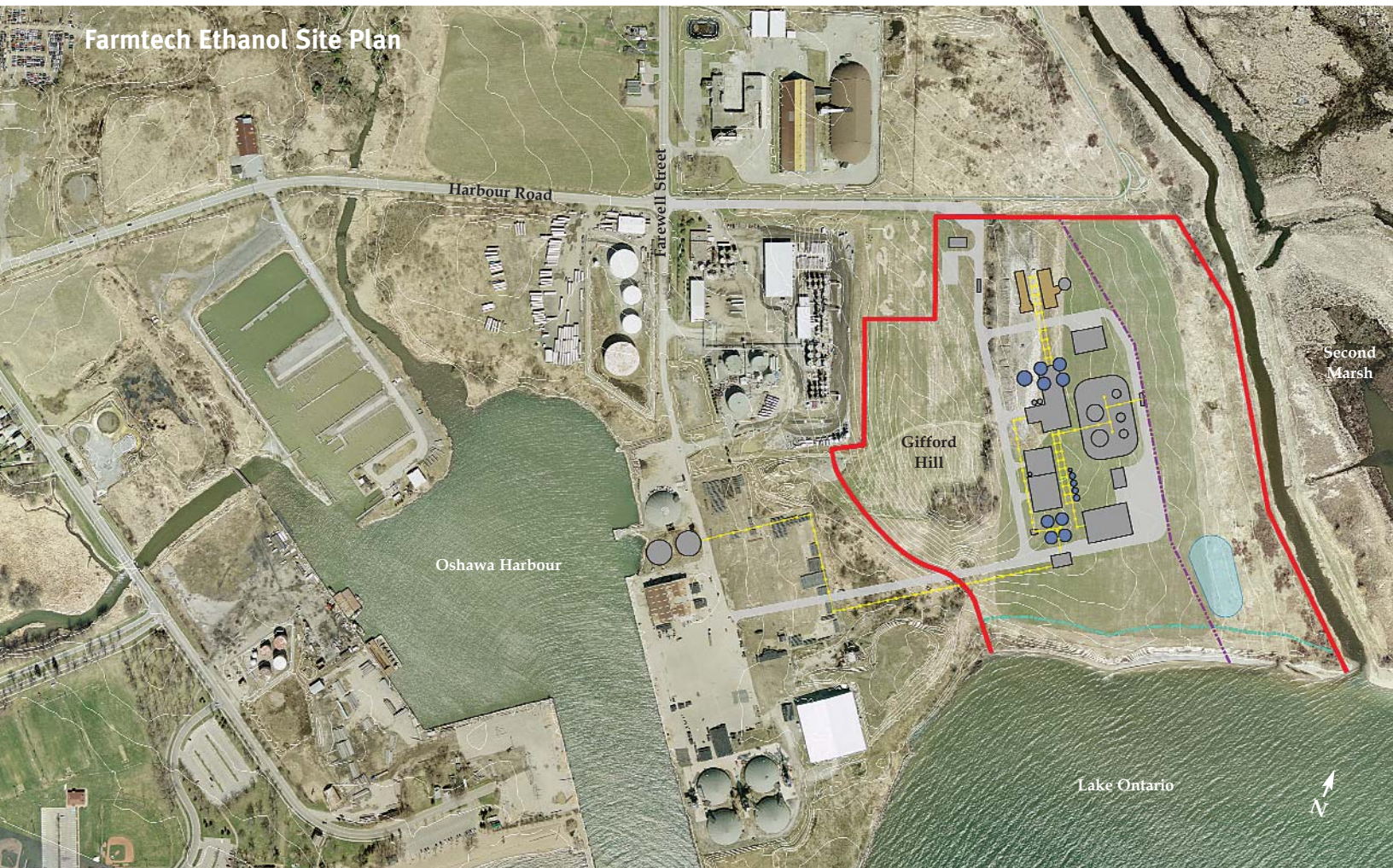
- Documents the findings of the environmental screening study
- Report available for public review

Environmental Effects Analysis and Mitigation:

- Identification and assessment of potential for positive and negative effects of the project construction, operation, and decommissioning phases
- Development of mitigation and impact management measures

Public Consultation Process:

- Open house this fall to inform the public and seek input
- Communication with municipal and government agencies to ensure all requirements are met for approvals
- Approvals required from provincial and public agencies including the Central Lake Ontario Conservation Authority, Ministry of Environment, Ministry of Natural Resources, City of Oshawa and Region of Durham
- Public notices at the beginning and completion of the study



- Property Boundary
- 120m Adjacent Land Buffer
- 40m Setback From Water
- Pipe Rack and Conveyor

0 100 200
Meters



To find out more go to: www.farmtechenergy.com

For further information contact:

Danna O'Brien – 416.961.6611 x102